



# Glen Ridge News



Volume 4, Issue 1  
December, 2009

## Principal's Message....

The arrival of cooler weather and the anticipation of the festive holiday season to come signals the end of our first academic term for 2009—2010.

The first term has been a busy and productive one for all students and staff at Glen Ridge. We extend a sincere thank you to our parents for their ongoing support and encouragement in the many activities our dedicated staff have made available to the student body.

With the closing of term one, everyone's thoughts turn to report cards. As you review the 1st term report card, I would suggest that you keep in mind that grades are not ends in themselves. On the contrary, grades are merely a convenient method for teachers to indicate a continuum of progress. The grades and the teachers comments are what, "paint" a true picture of a student's progress.

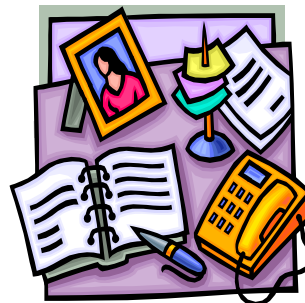
After reviewing the report card with your child, please take a few minutes to assist your child in setting realistic second term goals to work towards and then periodically discuss the progress being made toward these goals during the second term. Your co-operation and support in this area will help to ensure success for your child at Glen Ridge.

Once again, we have included a calendar of events outlining the special events to be held during the month of December. We extend a warm welcome to all parents to come and share in the warmth and excitement surrounding these festive activities.

In closing, I wish to extend to you and your family a festive holiday and the very best of good health, happiness and success in the new year.

Educationally yours,

B. Harley  
Principal



## A Glance Ahead to January 2010...

First Day of School for the New Year	4
Green Team Meets on Wednesdays	
Artists in the School	13
Pizza Day	14
School Council	20
Pep Rally for Dance-a-thon	26
Sub Day	27



## REMINDER!!! ...

A reminder that winter break is December 21<sup>st</sup> to January 1<sup>st</sup>. The first day of school is **Monday, January 4th, 2010.**



## Holiday Concert ...

On **Thursday, December 17<sup>th</sup>**, at 6:30 p.m., Glen Ridge students will be hosting their annual holiday music concert. For the evening performance, students should arrive for 6:00 p.m. and meet in their classrooms. Parents are invited to "get comfortable" in the gymnasium, ready for a concert start of 6:30 p.m. Students are currently learning their music and are encouraged to practice at home, memorizing their words. Students are also asked to wear festive colours to the concert (i.e. red, white, green). As in previous years, parents are asked to bring items for our Mitten Tree and a non-perishable food item to support Community Care.

## Report Cards ...

Our students received their first term report cards on Wednesday, December 2<sup>nd</sup>. Please review these with your children and fill out and return Page 3. Please take time to read these over and discuss with your children. If you have any questions, please call the school at (905)685-9586.

## Indoor Shoes ...

Just a reminder that all students need a pair of indoor shoes to wear in the classroom and during gym. This is a safety issue as well as it helps Mr. Bowman keep our school clean and shiny.



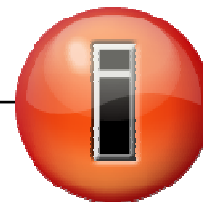
## Bus Parking ...

During the school day, all drivers need to adhere to the bus parking area in front of the school. When dropping off or picking up students, the bus driver needs that room to manoeuvre his large vehicle. Please help by parking in designated areas around the school or in the parking lot.



## From the Administration ...

We receive a number of messages in the school office concerning lunch arrangements, play dates, reminders to students about picking up siblings, how children are getting home, etc. We ask that you try and organize your day in the morning before your children leave for school, where possible. The office **can get very busy, especially at the end of the day** and sometimes messages do not get delivered before dismissal time. We appreciate your help and **will endeavour** to be prompt in delivering any urgent messages.





## Thanks to ...

---

The staff at Glen Ridge extend a sincere thank you to all parents for:

- making arrangements with their children prior to school about where they should be going at the end of the day
- **signing in** at the office when you visit Glen Ridge
- calling to inform the school when your child will be absent or late
- ensuring your children are punctual to ensure maximum instructional time and to reduce disruptions
- returning school correspondence in a timely fashion
- driving to volleyball games.

## Noisy Toys / Audio Devices / Dangerous Play ...

---

Parents may think that noise is a problem they need not worry about until their child reaches the teenage years. Not so. Some toys are so loud that they can cause hearing damage in some children. Some toy sirens and squeaky rubber toys can emit sounds of up to 90 decibels. These sounds can be as loud as a lawnmower and dangerous to a child's hearing. Workers would have to wear ear protection for similarly noisy sounds on the job. When held directly to the ear, as children often do, a noisy toy actually exposes the ear to as much as 120 decibels of sound, a damaging dose - the equivalent of a jet plane taking off. Noise at this level is painful and can result in permanent hearing loss. Toys that pose a noise danger include vehicles with horns and sirens, walkie talkies, musical instruments, karaoke machines, and toys with cranks. Personal sound systems such as MP3 players and Walkmans are additional sources of entertainment that also pose a noise danger. Parents should inspect toys for noise danger. Toys already at home or prior to purchasing a new toy should be listened to. If it sounds loud, take the batteries out, discard the toy or do not purchase it. Help your child develop a positive attitude about healthy listening habits. Teach your child that when using audio devices that plug into his/her ears, it is important to:

- **Lower** the volume
- **Limit** listening time
- **Wear** headphones that block out background noise, making it easier to listen at a lower volume.

## Security ...

---

Recently, some parents have taken the liberty of entering the school and interrupting classroom activities. Please remember to visit the main office during school hours (8:30—3:30) to sign in and to leave any messages or items for your child. If you require to speak to a teacher, they will call you to arrange a convenient time to meet. Thank you.

## What is a PM Benchmark? Who is CASI? And what do they have to do with my child's reading?

---

As you meet with your child's teacher this month, you may hear reference made to some of the standardized reading tests that our child has completed. These tests are administered to help us as teachers look more closely at the skills that are strong and those that need work in your child's ongoing reading progress.

**PM Benchmarks** is a reading assessment tool that is used in grades 1-3, and (when students are ready) in kindergarten. In completing the test, the student reads aloud in a one to one setting with the teacher. As your child reads, the teacher performs an error analysis. The reading text is leveled for difficulty and the accuracy of your child's reading allows the teacher to quantify the level of the child's decoding skills. However, the ability to say the words on the page is not all there is to reading. After your child has read the passage, the teacher asks several standard comprehension questions to check the child's ability to recall, infer, and connect with the material read. All of these measurements combined inform the benchmark level that your child has achieved at this time. The PM Benchmark tool is used several times throughout the year to allow for ongoing feedback about progress and struggles. Teachers use the results to inform their decisions about next steps for your child and the class, as well as for establishing guided reading groups that need to work on specific skills.

**CASI** is a reading assessment tool that is used from grades 4-8. The name is an acronym for Comprehension, Attitudes, Strategies, and Interests. The purpose of the CASI Reading Assessment is to diagnose each student's strengths and learning needs in order to provide appropriate programming for students and to track their growth as readers. Although the CASI program includes several assessment tools, the one you most often hear about as parents is a comprehension test consisting of an on-grade-level reading passage, followed by 8 standard reading comprehension questions to which students respond in writing. CASI questions have been designed to assess different components of reading comprehension, including: knowledge and understanding, critical thinking, conventions of written text, ability to apply what has been read, and to make connections among text, personal experiences, and life situations. Teachers use rubrics and exemplars to assess your child's work. The results of the tests inform decisions made about individual and class-wide programming. Students are explicitly taught the proper format for answering these types of questions and are provided with graphic organizers, anchor charts, and checklists to remind them to use the all of their knowledge and skills to complete the written answers.

Already students who have been at Glen Ridge since the start of September have been assessed using these tools *twice*- once to provide a baseline and a second time to measure progress. The results from the recent tests show remarkable growth in skills in all grades! It seems, then, another purpose for using these tools is to give authenticity to our celebrations. We look forward to celebrating your child's growth with you.

## Inclement Weather ...

---

In the event of poor weather, please listen to the local radio stations starting at 7:00 a.m. for information about busses not running or school closures. The decisions are made at the Board level, not by the school, and given to various surrounding radio stations for reporting.

CKTB 610 AM  
WAVE 94.7 FM  
K-LITE 102.9 FM  
CHSC 1220 AM

SPIRIT 91.7 FM  
CHTZ 97.7 FM  
CHRE 105.7 FM  
CHCH & CHUM TV



## Extended French ...

---

Anyone who is interested in having their child enter the Extended French program please note that the Parent/Guardian/Student Information Evening Session is Thursday January 14 at Oakridge Public School at 7:00 p.m.

## High School Open Houses ...

---

As parents of Glen Ridge students we are always thinking ahead. In anticipation of our student's inevitable entry to high school, and certainly wanting to keep all of our options open, why not attend Open House for our local DSBN High School, Sir Winston Churchill. Open House will be Monday, January 11, 2010 at 7:00 p.m.

## Glen Ridge Raffle Tickets ...

---

A reminder to get in your money for the raffle tickets that were sent home with your child(ren). Additional tickets are available through the school's office. If you are unable to sell them, please consider purchasing them as a donation to the school and a chance at 1 of 2 beautiful gift baskets. Thank you for your continued support of our school council and students at Glen Ridge Public.

## Cat's Caboose Social / Silent Auction ... Mark Your Calendar ...

---

We are pleased to offer a Cat's Social Night with a Silent Auction on Thursday February 11, 2010. There will be light snacks and finger foods offered, with a portion of the ticket cost coming back to Glen Ridge Public School. There will be 120 tickets available for purchase at \$20.00 per ticket. The event will begin at 7:00 p.m. til ?? Tickets will be available for purchase in January from the office.

## Photography Club

... Mrs. Boccinfuso

---

Photography club has been meeting for several months now. During that time the students have learned about rule of thirds, taking pictures of people, taking macro photos, taking photos outdoors, taking photos of architecture and taking abstract photos. Some of the students best work will be on display during the first week of December on the bulletin boards beside the office. Be sure to check out the great work. Members of the club are Sophie J., Elisabeth I., Emma J., Maya D., Georgia C. and Allison L. Thanks to Mrs. Boccinfuso, Mr. Boccinfuso and Miss James for all their help with the club.



## School Advisory Council

... J. Cawood-Fleury

Season's Greetings to all! Poinsettia orders are to be in by December 3<sup>rd</sup> and pick up of poinsettias from the school will be on December 10<sup>th</sup>. These dates were made to reflect the many families who have functions earlier in the festive season.

Collections for our Holiday Basket Raffle is going great. Parent Council and the teachers here at Glen Ridge are having a little competition as to who can have the most interesting basket. I have to say, Parent Council's basket is packed and looks outstanding. The winner of the draw will be revealed on the night of the holiday concert. So, buy some tickets for a chance to win either one of these baskets. One ticket for \$2 or 3 for \$5. Tickets can be bought from anyone on Parent Council or the school office. The holiday concert will be on December 17<sup>th</sup> at 6:30 pm.

The Glen Ridge M&M Meatshop Fundraiser was held on November 27<sup>th</sup>. 10% of your purchases were donated back to Glen Ridge. Friends and family just had to mention us when they made a purchase. Thanks to all who mentioned us!

The snow may not have arrived yet but the holiday season is fast approaching and on behalf of parent council I want to wish everyone at Glen Ridge along with their family and friends a very happy and safe holiday!

Cheers from your Parent Council Advisory Committee!

Jennifer Cawood-Fleury  
Parent Council Advisory, Chair

# December 2009

Mon	Tue	Wed	Thu	Fri
	1 Photo Club 	2 Report Cards Home Green Team Meeting 3:30-4:15	3  Poinsettia Orders Due No Robotics Parent/Teacher Interviews	4 P.A. Day—No School P.M. Parent/Teacher Interviews
7	8 Photo Club—Last Meeting 	9 Green Team Meeting 3:30-4:15	10 Pizza Day 	11
14	15 School Council Meeting 6:30pm	16 Annual Health & Safety Inspection Green Team Meeting 3:30-4:15	17 Poinsettias Ready for Pickup Christmas Holiday Concert— 6:30 p.m.  No Robotics	18 Pajama Day Last Day
21 	22	23	24	25
28 	29	Christmas Holiday's		
	30	No School		31